

Color Universe



Chromatic Color Documentation



Color Universe Availability

AkzoNobel

Color Universe is available



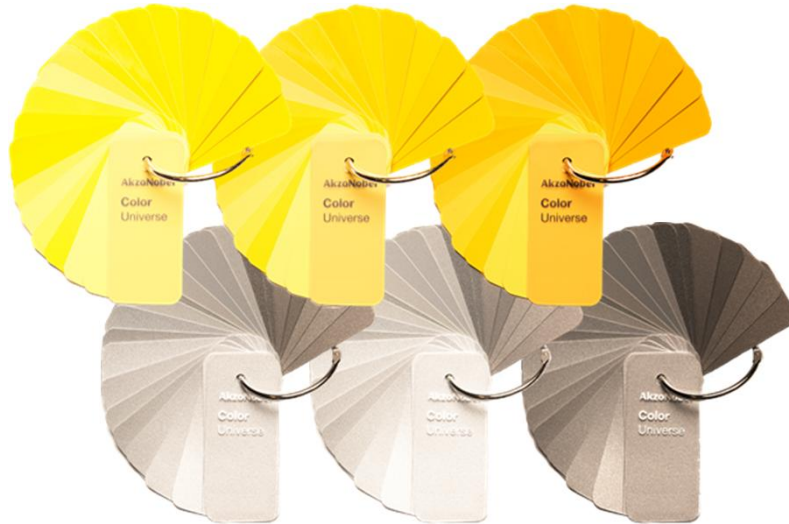
Left Cabinet Part# 2001349

Right Cabinet Part# 2001351

Color Decks Part# 2001459



Colors are chromatically ordered



Hue



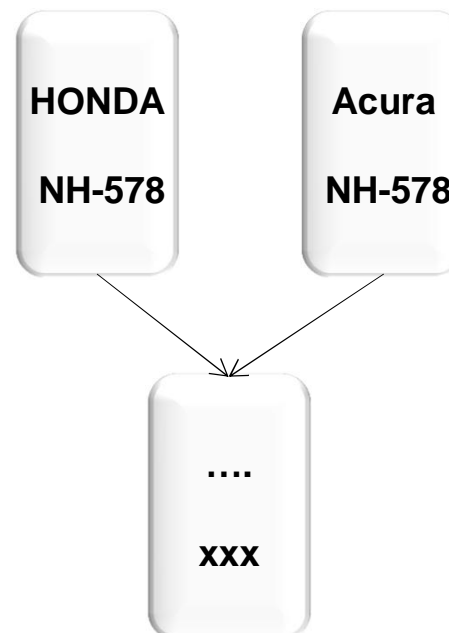
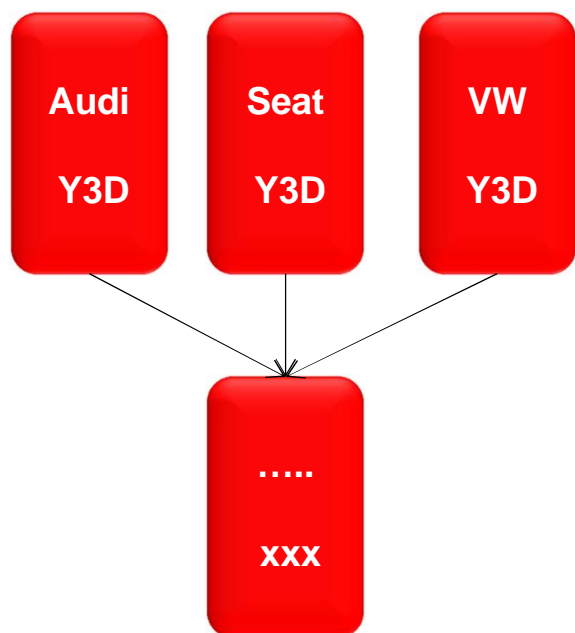
Lightness



Saturation

Remove all duplicated formulas

- cross-over colors



Numbering of Decks

The first letter stands for metallic (M) or solids (S)

The second corresponds to a color group

If there is no second letter, it is a Neutral color

Color Group	ACC H
Red	B
Orange	D
Beige Brown	E
Yellow	F
Olive	H
Green	M
Turquoise	P
Azure	Q
Sky	S
Blue	T
Violet	U
Purple	Y



Numbering of Decks

AkzoNobel

Color Group	ACC H
Red	B
Orange	D
Beige Brown	E
Yellow	F
Olive	H
Green	M
Turquoise	P
Azure	Q
Sky	S
Blue	T
Violet	U
Purple	Y

	ACC – Lightness
	0 – Dark 9 - Light
Metallic / Pearl (effects)	0 1 2 3 4 5 6 7 8 9
Solid	0 2 4 5 7 8



M = Metallic
E = Beige Brown
0 = Darkest
8 = Deck number



M = Metallic
Blank = Neutral
3 = Darker
08 = Deck number



S = Solid
B = Red
0 = Darkest
5 = Deck number

When there is no matching color chip, but there is a need for a color to be added...

- A new formula chip can be developed

Chip development criteria

- Market relevancy (>Year 2000)
- Color with variants
- Most common vehicle colors



Color Selection

From Code to Color



Finding the color

AkzoNobel



ColorPro



MIXIT

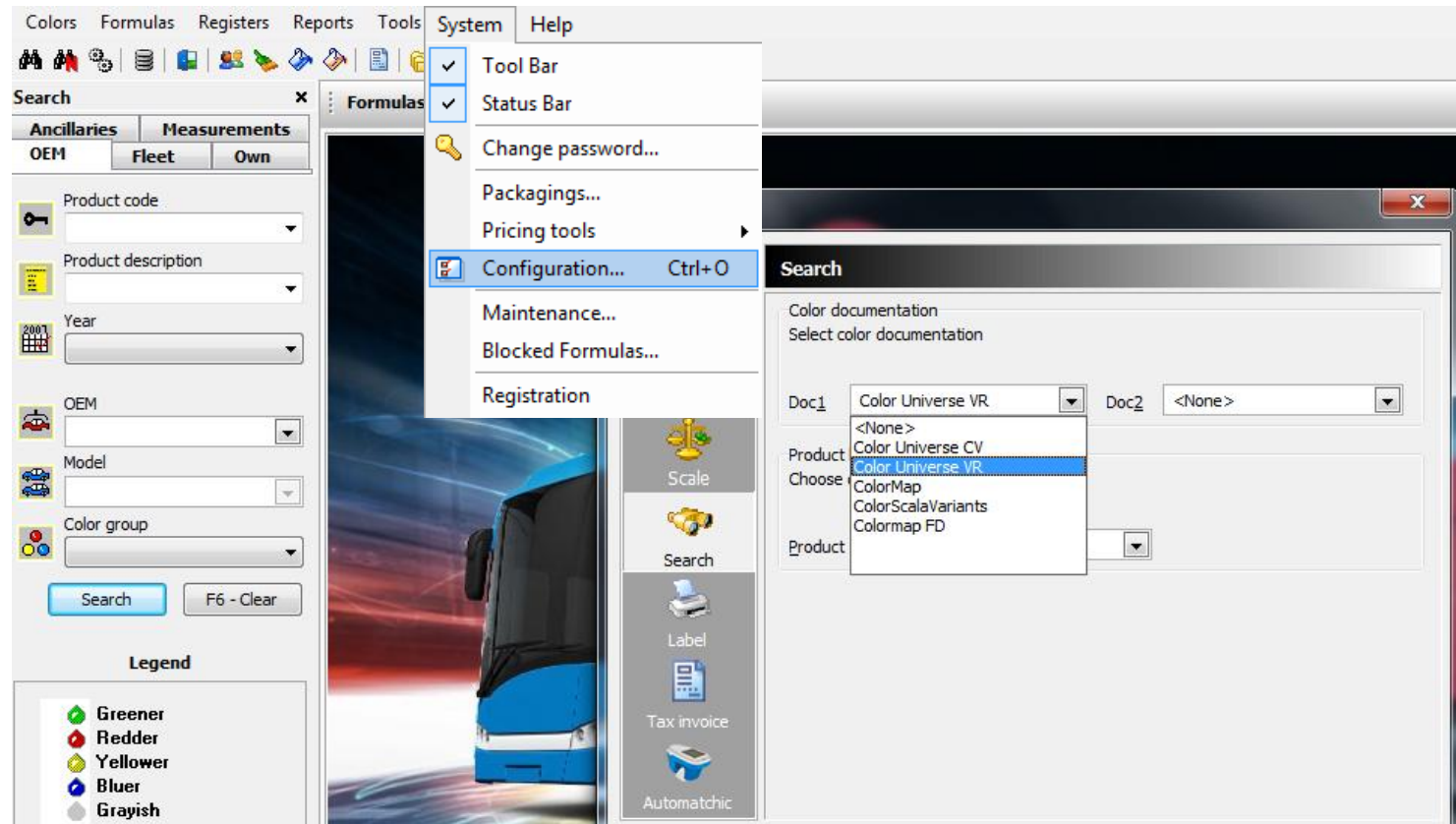


Chromatic Color Search

Set Up In Color Pro

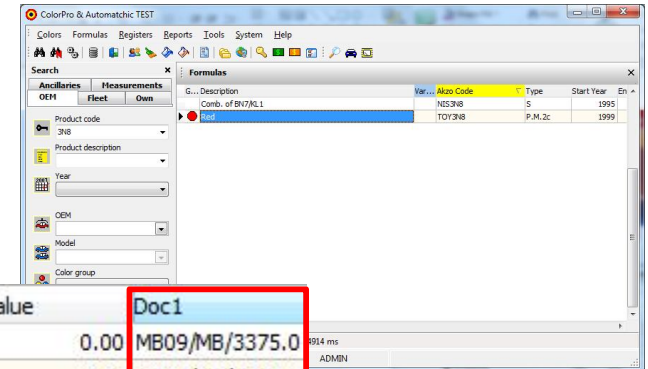
AkzoNobel

System >> Configuration >> Search >> Select 'Color Universe VR' From The Drop Down

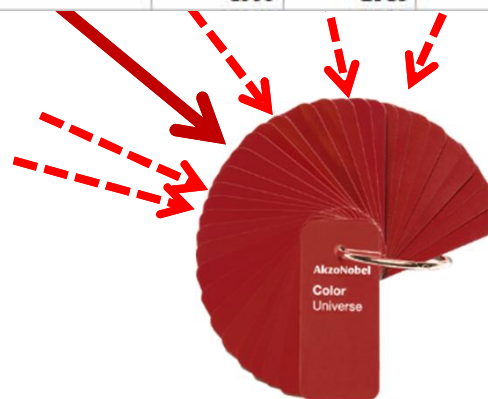


Search within Color Pro

AkzoNobel



Variant	Akzo Code	Start Year	End Year	Value	Doc1
▶	TOY3N8(L)	1999	2016	0.00	MB09/MB/3375.0
	TOY3N8(D)	1999	2016	0.00	MB09/MB/3345.0
	TOY3N8(B)AU	1999	2016	0.00	
	TOY3N8(R)TW	1999	2016	0.00	MB09/MB/3410.0
	TOY3N8(B1)	1999	2016	0.00	MB09/MB/3365.0



Color search by using MIXIT

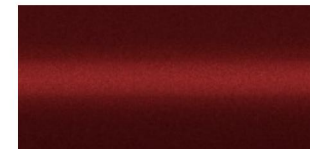


AkzoNobel



TOY3N8 (Red) - Toyota (1999 - 2016) - Pearl Metallic 2coat

Wandabase HS



TOY3N8

Color Universe VR: MB 09 / MB/3370.0

Amount

1.00

L

Minimum amount: 0.10 L.

Print

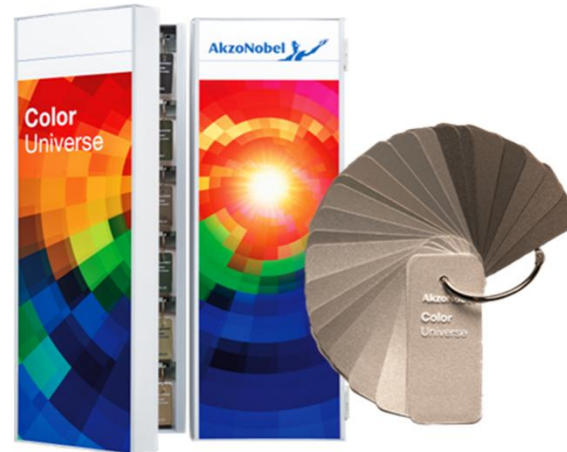
Layer 1

Toner	Weight
2203	513.9 g
1990	536.8 g
2840	560.4 g
2942	675.9 g
2923	962.0 g



Chromatic color search

AkzoNobel



Search

Ancillaries Measurements

OEM Fleet Own

Product code
M9/2710.0

Product description

Year

OEM

Model

Color group

Search F6 - Clear

Formulas

G... Description	Var...	Akzo Code	Type	Start Year	End Year	OEM
Neutral		M9/2710.0	M.2c	2014	2020	Color

Toner	Quantity (g)	Status
2004	614.6	
2233	2.4	
2840	35.5	
2244	37.3	
2100	49.9	
1990	95.4	
2400	118.6	

Thank you!

